

Article

# Studying the Influence of Nitrogen Deposition, Precipitation, Temperature, and Sunshine in Remotely Sensed Gross Primary Production Response in Switzerland

Marta Gómez Giménez <sup>1,2,\*</sup> , Rogier de Jong <sup>1</sup> , Armin Keller <sup>3</sup>, Beat Rihm <sup>4</sup>  and Michael E. Schaepman <sup>1</sup> 

<sup>1</sup> Remote Sensing Laboratories, Department of Geography, University of Zurich, Winterthurerstrasse 190, CH-8057 Zurich, Switzerland; rogie.dejong@geo.uzh.ch (R.d.J.); michael.schaepman@geo.uzh.ch (M.E.S.)

<sup>2</sup> Senckenberg Biodiversity and Climate Research Centre, Georg-Voigt-Straße 14-16, D-60325 Frankfurt am Main, Germany

<sup>3</sup> Agroscope - Institute for Sustainability Sciences Swiss Soil Monitoring Network NABO, Reckenholzstrasse 191, CH-8046 Zurich, Switzerland; armin.keller@agroscope.admin.ch

<sup>4</sup> Meteotest AG, Fabrikstrasse 14, CH-3012 Bern, Switzerland; beat.rihm@meteotest.ch

\* Correspondence: marta.gomez@geo.uzh.ch

Received: 31 March 2019; Accepted: 8 May 2019; Published: 12 May 2019



**Abstract:** Climate, soil type, and management practices have been reported as primary limiting factors of gross primary production (GPP). However, the extent to which these factors predict GPP response varies according to scales and land cover classes. Nitrogen (N) deposition has been highlighted as an important driver of primary production in N-limited ecosystems that also have an impact on biodiversity in alpine grasslands. However, the effect of N deposition on GPP response in alpine grasslands hasn't been studied much at a large scale. These remote areas are characterized by complex topography and extensive management practices with high species richness. Remotely sensed GPP products, weather datasets, and available N deposition maps bring along the opportunity of analyzing how those factors predict GPP in alpine grasslands and compare these results with those obtained in other land cover classes with intensive and mixed management practices. This study aims at (i) analyzing the impact of N deposition and climatic variables (precipitation, sunshine, and temperature) on carbon (C) fixation response in alpine grasslands and (ii) comparing the results obtained in alpine grasslands with those from other land cover classes with different management practices. We stratified the analysis using three land cover classes: Grasslands, croplands, and croplands/natural vegetation mosaic and built multiple linear regression models. In addition, we analyzed the soil characteristics, such as aptitude for croplands, stone content, and water and nutrient storage capacity for each class to interpret the results. In alpine grasslands, explanatory variables explained up to 80% of the GPP response. However, the explanatory performance of the covariates decreased to maximums of 47% in croplands and 19% in croplands/natural vegetation mosaic. Further information will improve our understanding of how N deposition affects GPP response in ecosystems with high and mixed intensity of use management practices, and high species richness. Nevertheless, this study helps to characterize large patterns of GPP response in regions affected by local climatic conditions and different land management patterns. Finally, we highlight the importance of including N deposition in C budget models, while accounting for N dynamics.

**Keywords:** gross primary production; land cover; precipitation; temperature; sunshine; nitrogen deposition; carbon fixation; models; multiple linear regressions

## 1. Introduction

Organic carbon (C), which is fixed through photosynthesis, provides agricultural soils with the quality required to obtain high yields [1]. The most substantial fluxes of C fixed per unit of ground and time (gross primary production (GPP)) [2] occur in the tropics, subtropics, and humid temperate regions, e.g., Eastern North America and Western and Central Europe [3]. In particular, Western Europe has one of the highest cultivated net primary productions in the world ( $>1 \text{ Kg C/m}^2$ ) [4]. Climatic variables have been widely used to monitor C fixation [5–7]. In particular, temperature analyses have traditionally dominated C budget studies [8]. Current approaches include other factors, such as  $\text{CO}_2$  fertilization,  $\text{O}_3$ , Nitrogen (N) deposition, and land cover change [9–12]. However, controlling factors, scale, and the ecosystem's complexity vary among studies and, consequently, the extent to which limiting factors influence C fixation response.

In croplands and grasslands, climate, soil type, and land management have been highlighted as important controlling factors of C response [13–15]. At a global scale, precipitation has been reported as the climatic component with the highest impact on the primary production of croplands and temperate grassland biomes (up to 50 and 70% of the total area, respectively) but the influence varies depending on the characteristics of the studied region [6]. Nitrogen (N) deposition has been highlighted as an important driver of primary production in N-limited ecosystems that also have an impact on biodiversity in alpine grasslands. Stevens, et al. [9] have pointed out that N deposition drives local grassland primary production better than the mean annual climatic variables and soil conditions on a global scale. Similar results have been reported in a meta-analysis using 32 studies of grasslands located in temperate regions and six in tropical areas [16]. Global model projections revealed N deposition as the third driver with the most significant impact on biodiversity in alpine areas, which also influence primary productivity [17,18]. Therefore, monitoring N deposition and climatic variables in alpine grasslands could contribute to explaining how these variables drive GPP in areas with complex topography and high species richness.

In Switzerland, alpine meadows and pastures cover 12% of the total territory (5139 km<sup>2</sup> out of 42,285 km<sup>2</sup>) and grasslands occupy ca. 71% of the remaining utilized agricultural area [19,20]. The results of experimental studies in (sub-) alpine areas (1500–3000 m a.s.l.) highlight N deposition, temperature, grazing, presence of rocks and stones, and shallow soils as the most limiting factors of biomass production and C storage [21–23]. However, in these remote areas, studies on large-scale interactions among N deposition, climatic factors, and GPP are lacking. On one hand, coarse spatial resolution datasets are widely used for calibration and validation of Earth system models. On the other hand, the role of N deposition in C uptake is still considered unclear, underestimated, or underexplored [24–27]. Therefore, analyzing whether observed local interactions between climatic factors, N deposition, and GPP remain true at a large scale is relevant to fostering the use of N deposition datasets in modelling approaches.

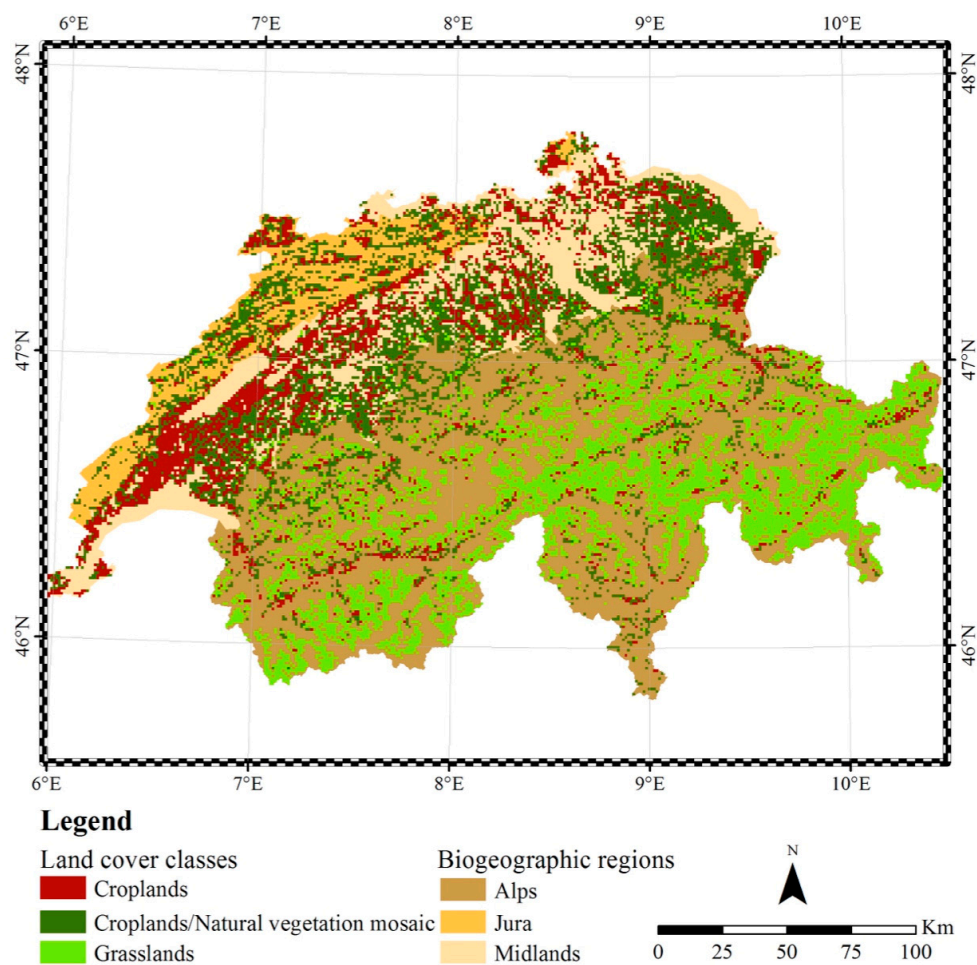
Available N deposition maps for Switzerland brought along the opportunity to study its impact on GPP response at a national scale for the first time. Remotely sensed GPP datasets are also available to study C dynamics of land cover at global and regional scales [28]. While previous versions of MODIS GPP products have shown underestimated and overestimated trends at high and low production sites, respectively [29,30], different validation efforts and following improvements in the algorithms have enhanced the reliability of remotely sensed GPP products for multiple applications [31–33]. As a result, these products are suitable to study the production of land vegetated areas [34]. The objectives of this study are (i) to analyze the impact of N deposition and climatic variables (precipitation, sunshine, and temperature) on C fixation response in alpine grasslands, and (ii) to compare the results obtained in alpine grasslands with those from other land cover classes with different management practices. We stratified the analysis according to the MODIS land cover product (MCD12Q1) i.e., grasslands, croplands, and croplands/natural vegetation mosaic [35] and used multiple linear regressions, which have been often selected to analyze the relationship between GPP and covariates [36–38]. In addition,

we analyzed the soil characteristics, such as aptitude for croplands, stone content, and water and nutrient storage capacity for each class to interpret the results.

## 2. Materials and Methods

### 2.1. Study Area

Switzerland is divided into biogeographic regions according to flora and fauna patterns [39], (Figure 1). The Midlands are intensively managed with agricultural land use, covering ca. 50% of the area [40]. This is a heterogeneous floristic region with an altitudinal range between 256 m and 960 m a.s.l. [41]. The land cover class croplands mainly cover the Midlands (Figure 1). The altitudinal gradient impacts climatic patterns and management practices. High intensity of use occurs at altitudes lower than 1000 m a.s.l., and extensive management practices are frequent above this elevation [42,43]. In the Alps, pastures co-exist with extensively managed meadows with low yields and high plant species diversity [44,45]. The land cover class grasslands are mostly located in this area (Figure 1). Silvopastoral systems (mosaic of open grasslands, closed forest, and woody pastures) are characteristic of the Jura mountains, with diverse management practices adapted to local conditions, such as cattle stocking and logging [46–48]. The land cover class croplands/natural vegetation mosaic mostly covers this region (Figure 1).



**Figure 1.** Study area. Land cover classes distributed across (aggregated, e.g., Alps) biogeographic regions. Coordinate system: WGS84.

The Alps divide the country producing cooler temperatures in the North than in the South, which is influenced by the Mediterranean Sea. The Atlantic Ocean also influences the Swiss climate,

producing an average precipitation of ca. 2000 mm/year in the Alps and 1000–1500 mm/year in the lowlands. Altitude influences temperature, which ranges from 1 °C in winter to 17 °C in summer at low altitudes (<1000 m a.s.l.); from −5 °C in winter to 11 °C in summer at 1500 m a.s.l.; and annual means of −7.5 °C at altitudes above 3000 m a.s.l. [49]. The Midlands receive more relative sunshine than the Alps and the Jura [50].

## 2.2. Data

### 2.2.1. MODIS Datasets

MODIS GPP datasets were available from the year 2000 to present (data: [http://files.ntsg.umt.edu/data/NTSG\\_Products/](http://files.ntsg.umt.edu/data/NTSG_Products/)). Total annual values per pixel of 8-day GPP composite products (MOD17A2 version 5.5) for the years 2000, 2007, and 2010 were used in this study [51]. These years were selected to allow a comparison with the available N deposition datasets at the time of the study. Flagged data were filtered out.

The MOD17A2 algorithm estimates GPP based on a radiation conversion efficiency approach with attenuation scalars for low temperature and water stress across biomes, using the MODIS land cover product (MOD12) (1). These parameters are specific for each biome and are available through a biome-property-look-up-table [52]. Scalars are estimated from coarse spatial resolution climate datasets. While the use of daily climate data at higher spatial resolutions can improve the quantification of GPP [53], MODIS products are still useful for characterizing how climate influences annual GPP response at regional scales [54,55]. We considered MODIS GPP as a good compromise between observational data available at a spatial resolution of 1km and data quality:

$$GPP = \varepsilon_{max} * TMIN_{scalar} * VPD_{scalar} * SWRad * 0.45 * FPAR \quad (1)$$

where  $\varepsilon_{max}$  is the maximum light use efficiency ( $\text{kg C MJ}^{-1}$ ),  $TMIN_{scalar}$  and  $VPD_{scalar}$  are scalars between 0 and 1 that attenuate light use efficiency values based on daily minimum temperature, the vapour pressure deficit,  $SWRad * 0.45$ , corresponds to the amount of incident shortwave radiation for photosynthesis, and is the fraction of absorbed photosynthetic active radiation (PAR).

The land cover classes used in this study were obtained from the MODIS product MCD12Q1 [35], which is also used as an input to the algorithm that retrieves GPP. Therefore, we stratified the analysis, according to MODIS land cover classes, for consistency. We selected: Grasslands, croplands, and croplands/natural vegetation mosaic. The land cover classes croplands and croplands/natural vegetation mosaic are mostly found in the Midlands (or Swiss Plateau) and the Jura mountains, and the class grasslands is mainly located in the Alps. According to the Digital Height Model [56], the land cover classes selected can be found from a minimum altitude of ca. 200 m to a maximum altitude of 2634 m a.s.l. in croplands, 3033 m a.s.l. in croplands/natural vegetation mosaic, and 3570 m a.s.l. in grasslands.

The GPP algorithm is based on the UMD classification scheme proposed by the University of Maryland (UMD). However, we used the International Geosphere and Biosphere Programme (IGBP) legend, in which the UMD class croplands is divided in two classes: Croplands and croplands/natural vegetation mosaic. Friedl, et al. [35] reported an overall accuracy of 74.8% for the MCD12Q1 product using the IGBP legend with 16 classes. The classes 10, 12, and 14 were selected i.e., grasslands, croplands, and croplands/natural vegetation mosaic, respectively. All datasets were used at a spatial resolution of 1 km.

### 2.2.2. N Deposition Datasets

N deposition raster data for the years 2000, 2007, and 2010 [57] were produced with a spatial resolution of 1 km (Appendix A, Figure A1). The N deposition model assimilates land use information from the Swiss Land-Use Statistics point grid, which provides information based on the visual interpretation of aerial photographs at 0.1 km spatial resolution [58]. In order to provide the reader



with some background about the Swiss Land-Use Statistics, we include here some details about how the selected MODIS classes relate to this dataset. The Swiss Land-Use Statistics classes considered in the model are arable land (class 221, nomenclature NOLU04), semi-natural grasslands (class 222), alpine meadows (class 241), and alpine pastures (class 242). The class arable land overlapped the MODIS classes croplands by 40.6%, the croplands/natural vegetation mosaic by 35.4%, and the grasslands by 1.35%. The class semi-natural grasslands overlapped the MODIS classes croplands/natural vegetation mosaic by 43.3%, the croplands by 11.7%, and the grasslands by 8.8%. The class alpine meadows overlapped the MODIS classes grasslands by 27.2%, the croplands/natural vegetation mosaic by 12.5%, and the croplands by 9.84%. Finally, the class alpine pastures overlapped the MODIS classes grasslands by 39.9%, the croplands/natural vegetation mosaic by 9.7%, and the croplands by 5.1%. Therefore, arable land and semi-natural grasslands are mostly covered by the MCD12Q1 classes croplands and croplands/natural vegetation mosaic, respectively, and alpine meadows and pastures are mainly covered by the MCD12Q1 class grasslands. In order to avoid possible mismatches between dry deposition and MODIS land cover classes, specific N deposition maps, including only low vegetation (excluding forests), were produced.

N deposition maps have been retrieved following a modelling approach based on wet and dry deposition of nitrate and ammonium, as well as gaseous deposition of  $\text{NH}_3$ , nitrogen dioxide ( $\text{NO}_2$ ), and nitric acid. Atmospheric N deposition was mapped using a pragmatic approach that combines emission inventories, statistical dispersion models, monitoring data, spatial interpolation methods, and inferential deposition models [59]. Concentrations of the primary gaseous pollutants ( $\text{NH}_3$  and  $\text{NO}_2$ ) are estimated by means of emission maps and statistical dispersion models with a resolution of  $100 \times 100 \text{ m}^2$ . As a result, the high spatial variability of these pollutants near emission sources can be reflected in the models. The concentrations of secondary pollutants (aerosols,  $\text{HNO}_3$ ), as well as the concentrations of N in precipitation, are derived from field monitoring data by applying geo-statistical interpolation methods. Combustion processes and agricultural activities are the main sources of these atmospheric components. In particular, agricultural management practices account for 92% of ammonia ( $\text{NH}_3$ ) emissions, livestock being the main contributing source. Application and storage of manure (38% and 13.8%, respectively), housing (28.4%), and grazing (2.2%) add up to 82.4% [59]. Therefore, fertilization practices influence  $\text{NH}_3$  concentrations directly. Modelled ammonia concentrations were validated with measured concentrations from 48 monitoring sites,  $R^2 = 0.526$  (Root Mean Square Error, RMSE = 43%) [59]. Furthermore, the authors of a recent study concluded that N deposition maps provide reliable estimates for large areas [60]. (Data: <https://www.bafu.admin.ch/bafu/en/home/topics/air/state/data/historical-data/maps-of-annual-values/map-of-nitrogen-deposition.html>).

### 2.2.3. Weather Datasets

We used gridded datasets of mean annual values of temperature, yearly-accumulated precipitation, and yearly relative sunshine duration (the ratio between the effective sunshine duration and the maximal possible sunshine duration) for the years 2000, 2007, and 2010 (further information regarding the spatial variability of these datasets can be found in the Appendix A: Figure A2, Figure A3, and Figure A4) with a spatial resolution of 2.3 km [61].

Weather datasets were resampled to 1 km, allowing comparison with the other datasets. Mean annual temperature reveals standard errors of  $0.5^\circ$  for the Swiss Plateau/Jura and  $0.7^\circ$  for the Alps [62]. Cross-validation of annual precipitation datasets reports  $\pm 20\%$  for the Jura and the Swiss Plateau and  $\pm 25\text{--}30\%$  for the Alps [63]. Sunshine datasets reached median absolute values of less than 5% for the autumn/winter months and 3% for the summer months [64]. (Data: <http://www.meteoswiss.admin.ch/home/climate/swiss-climate-in-detail/monthly-and-annual-maps.html?query=Grid-Data+products>).

### 2.3. GPP Response to Limiting Factors Per Land Cover Class: Statistical Analysis

Multiple linear regression models were built for the years 2000, 2007, and 2010, according to the spatial extension of grasslands, croplands, and croplands/natural vegetation mosaic. A sample with unique values was selected in order to avoid potential oversampling caused by downscaling weather datasets to 1 km spatial resolution (see Section 2.2.3). The number of samples per land cover class was between 2066 and 3370 (Table 1). Cook's distance [65] ( $4/n$ ,  $n$ : Number of samples) helped exclude outliers and values producing leverage. GPP was the dependent variable and precipitation; temperature, sunshine, and N deposition were the independent variables for all the years. Linearity between dependent and independent variables was checked for each land cover class and year using descriptive statistics (e.g., correlation matrices Figures A5 and A7) and scatterplots of the standardized residuals and standardized predicted values (Figures A6 and A8). Natural logarithms were applied to the independent variable in case of non-linearity with the dependent variable (e.g., N deposition with GPP). Including a transformed version of the predictor allows incorporate non-linear associations into the linear model [66].

**Table 1.** Number of samples ( $n$ ) of all the variables (gross primary production (GPP), Nitrogen (N) deposition, temperature, precipitation, and sunshine). Class 10: Grasslands, Class 12: Croplands, and Class 14: Croplands/natural vegetation mosaic.

Year	2000			2007			2010		
Class	10	12	14	10	12	14	10	12	14
n	2988	2066	3327	2978	2074	3370	2965	2074	3346

The final set of explanatory variables selected by the model differed per land cover class and year, according to the following procedure: The model (forward stepwise) selected the order of entry of each variable, according to the correlation between the independent variable and the dependent variable. The independent variable with the highest correlation with the dependent variable was entered into the model first. The rest of the explanatory variables were then entered into the model automatically, according to their correlation with GPP and as long as the default tolerance threshold (0.0001) of collinearity between the explanatory variable was already in the model and the new entered one was not exceeded. Collinearity statistics were estimated to check the suitability of the final set of variables selected by the model. Collinearity represents a serious issue when tolerance ( $T = 1 - R^2$ ) drops below 0.1 or variance inflation factor ( $VIF = 1/T$ ) is above 10 [67,68]. The probability of the model to select an explanatory variable was also defined by entry criteria with a threshold of  $p < 0.05$  and removal criteria with a threshold of  $p > 0.1$ .

Independence of residuals was analyzed with the Durbin–Watson (D–W) test. The D–W ranges from 0 to 4, with values equaling 2, indicating no correlation. Normal distribution of the standardized residuals was checked with P–P (probability–probability) plots and histograms (data not shown). Homoscedasticity was analyzed with two tests, namely Breuch–Pagan (B–P) and Koenker (K). The latter was used in case of non-normal distribution of standardized residuals. In case the assumption of homoscedasticity was violated (e.g., see Figure A8 with an inverse butterfly heteroscedasticity), heteroscedasticity-consistent (HC) standard errors were estimated [65]. The HC4 estimator was used for all the cases because of high performance in case of high leverage or non-normal distributed errors [69]. Finally, we estimated the shrunken (SR)  $R^2$  with a leave-one-out cross-validation approach for statistical inference from our regression models to the population data of the studied land cover classes in Switzerland [65]. These analyses were carried out using a macro developed for SPSS® [65,69].

### 2.4. Soil Characteristics Per Land Cover Class

The digital soil suitability map for Switzerland was generated in the 1970s at a scale of 1:200'000, using spatial information regarding geology, elevation, terrain attributes, and climatic zones. This map

helped interpret our results and characterize the selected land cover classes in terms of soil aptitude for croplands, stone content, and water and nutrient storage capacity (Table 2) [70]. The soil suitability map was converted to a raster layer with a spatial resolution of 1 km. This raster layer was used to estimate the zonal statistics (minority and majority values). The value of the polygon that overlapped the center of the raster cell was used to assign the value to the cell. These analyses were carried out in ArcGIS 10.4.1®.

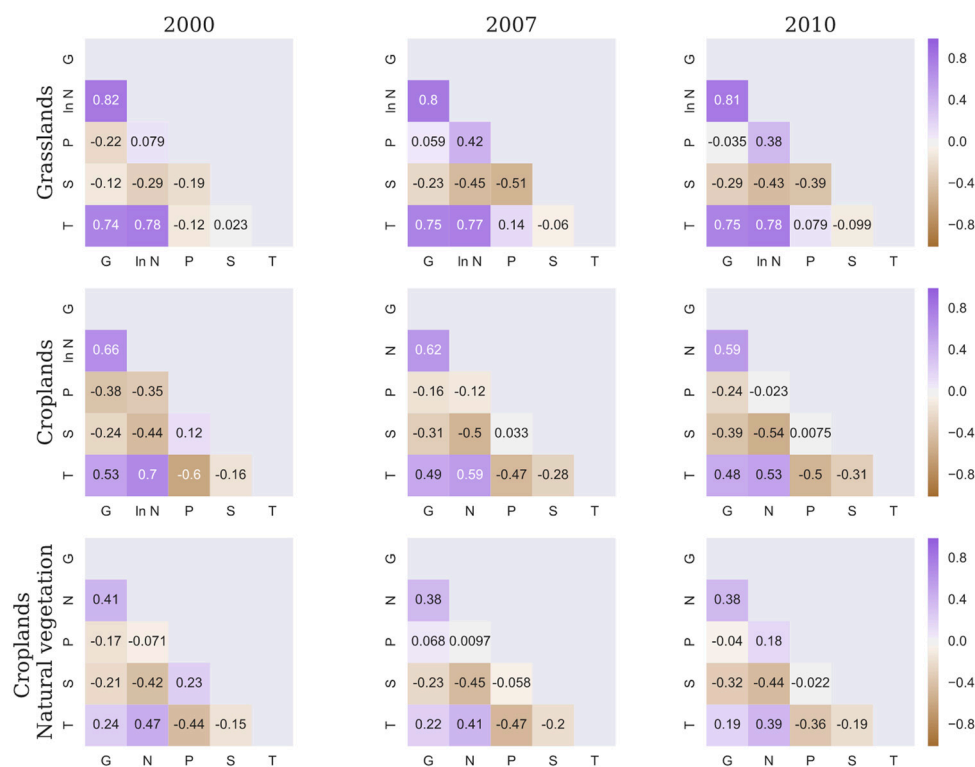
**Table 2.** Classes selected of the soil suitability map divided in levels.

Class	Aptitude for Croplands	StoneContent	Water Storage Capacity	Nutrient Storage Capacity
1	Very good	Not stony	Extremely low	Extremely low
2	Good	Slightly stony	Very low	Very low
3	Medium	Stony	Low	Low
4	Limited	Very stony	Medium	Medium
5	Inappropriate	Extremely stony	Good	Good
6		Unknown	Very good	Very good
7			Unknown	Unknown

### 3. Results

#### 3.1. GPP Response to Limiting Factors Per Land Cover Class: Statistical Analysis

The highest correlations were found between GPP and N deposition and between GPP and temperature. The lowest correlations were found between GPP and precipitation. In particular, very low correlation or no correlation between both variables were found in 2007 and 2010 for grasslands ( $\approx 0.06$  and  $\approx -0.04$ , respectively,  $p < 0.01$ ) and croplands/natural vegetation mosaic ( $\approx 0.07$   $p < 0.01$  and  $-0.04$   $p < 0.05$ ) (Figure 2 and Appendix A, Tables A1–A3).



**Figure 2.** Correlation matrix between the dependent and independent variables per year and land cover class ( $p < 0.01$  mostly, see Appendix A, Tables A1–A3). G: GPP, N: N deposition, ln N: natural logarithm of N deposition, P: Precipitation, S: Sunshine, and T: Temperature.

In grasslands, the two variables that mostly explained the GPP variance were N deposition and precipitation (Table 3). In croplands, N deposition was the independent variable that influenced the most GPP response. Precipitation followed N deposition in relevance for the years 2000 and 2010. In 2007, temperature was, however, the variable that followed N deposition in importance and the remaining variables were excluded from the model (Table 3). In croplands/natural vegetation mosaics, N deposition largely explained the GPP response followed by precipitation in the years 2000 and 2007 and sunshine in 2010 (Table 3).

**Table 3.** Coefficient of determination ( $R^2$ ) change per variable (alphabetically ordered) that the stepwise regression model selected for grasslands, croplands, and croplands/natural vegetation mosaics. Excl: Excluded. Natural logarithms of N deposition used for grasslands in all the years and for croplands in 2000.

	Grasslands			Croplands			Croplands/Natural Vegetation Mosaics		
	2000	2007	2010	2000	2007	2010	2000	2007	2010
<b>N deposition</b>	67.7%	63.7%	66.0%	44.1%	37.9%	34.6%	16.9%	14.1%	14.2%
<b>Precipitation</b>	8.1%	9.5%	13.6%	2.7%	Excl.	5.0%	2.1%	1.4%	1.0%
<b>Sunshine</b>	0.5%	0.1%	0.3%	0.2%	Excl.	0.7%	Excl.	0.3%	2.9%
<b>Temperature</b>	0.2%	1.4%	0.2%	Excl.	2.4%	0.6%	Excl.	0.5%	Excl.

In grasslands, Pearson's correlations [65] showed that N deposition and temperature were the variables with the highest correlation with GPP (Figure 2 and Appendix A, Table A1). The model with the lowest RMSE (including all explanatory variables) reached collinearity values of 0.23 for T and 4.5 for VIF. The addition of variables to the ones already in the model (e.g., model 1: N deposition, model 2: N deposition and precipitation) increased the coefficient of determination ( $R^2$ ) up to 0.77 in 2000, 0.75 in 2007, and 0.8 in 2010 (Table 4). In croplands, N deposition and temperature were the most correlated independent variables with GPP in all the years (Figure 2 and Appendix A, Table A2). However, correlation between these variables resulted either in exclusion of the one less correlated with GPP or a later addition into the model. The final model achieved collinearity statistics between 0.49 and 0.88 for T and between 1.14 and 2.06 for VIF. The explanatory variables reached adjusted  $R^2$  values ca. 0.4 (Table 5). In croplands/natural vegetation mosaics, the explanatory variables that reached high correlation with GPP were N deposition followed by positive correlations with temperature and negative correlations with sunshine (Figure 2 and Appendix A, Table A3). The model with the lowest RMSE achieved values between 0.61 and 0.99 for T and 1 and 1.6 for VIF. Adjusted  $R^2$  values reached ca. 0.18 in 2000 and 2010, and 0.16 in 2007 (Table 6).

**Table 4.** Order of variables entered into the model and adjusted  $R^2$  for grasslands, according to the addition of a new variable to the model: Ln N dep: Natural logarithm of N deposition, Temp: Temperature, Precip: Precipitation, and Sunsh: Sunshine. \*\*\* Statistically significant  $p < 0.001$ .

Order	2000		Order	2007		Order	2010	
	Adjusted $R^2$	RMSE		Adjusted $R^2$	RMSE		Adjusted $R^2$	RMSE
<b>Ln N dep</b>	0.677 ***	0.225	Ln N dep	0.637 ***	0.246	Ln N dep	0.660 ***	0.220
<b>Precip</b>	0.759 ***	0.194	Precip	0.731 ***	0.212	Precip	0.796 ***	0.171
<b>Sunsh</b>	0.764 ***	0.192	Temp	0.746 ***	0.206	Temp	0.798 ***	0.170
<b>Temp</b>	0.766 ***	0.191	Sunsh	0.747 ***	0.206	Sunsh	0.800 ***	0.169



**Table 5.** Order of variables entered into the model and adjusted  $R^2$  for croplands, according to the addition of a new variable to the model: N dep: N deposition, Ln N dep: Natural logarithm of N deposition, Temp: Temperature, Precip: Precipitation, and Sunsh: Sunshine. Excl: Variable excluded from the model. \*\* Statistically significant  $p < 0.01$ . \*\*\* Statistically significant  $p < 0.001$ .

Order	2000		2007			2010		
	Adjusted $R^2$	RMSE	Order	Adjusted $R^2$	RMSE	Order	Adjusted $R^2$	RMSE
Ln N dep	0.441 ***	0.194	N dep	0.378 ***	0.212	N dep	0.346 ***	0.211
Precip	0.468 ***	0.190	Temp	0.402 ***	0.207	Precip	0.395 ***	0.203
Sunsh	0.470 **	0.189	Precip	Excl		Sunsh	0.402 ***	0.202
Temp	Excl		Sunsh	Excl		Temp	0.408 ***	0.201

**Table 6.** Order of variables entered into the model and adjusted  $R^2$  for croplands/natural vegetation mosaics according to the addition of a new variable to the model: N deposition: N dep, Temp: Temperature, Precip: Precipitation, and Sunsh: Sunshine. Excl: Variable excluded from the model. \*\*\* Statistically significant  $p < 0.001$ .

Order	2000		2007			2010		
	Adjusted $R^2$	RMSE	Order	Adjusted $R^2$	RMSE	Order	Adjusted $R^2$	RMSE
N dep	0.169 ***	0.228	N dep	0.141 ***	0.247	N dep	0.142 ***	0.238
Precip	0.189 ***	0.225	Temp	0.146 ***	0.246	Sunsh	0.171 ***	0.234
Sunsh	Excl		Precip	0.160 ***	0.244	Precip	0.181 ***	0.232
Temp	Excl		Sunsh	0.163 ***	0.243	Temp	Excl	

In grasslands, standardized residuals were normally distributed in all the cases. D–W values from 1.9 to 2 indicated independence of residuals, and the B–P test showed residuals with heteroscedasticity that were statistically significant. The leave-one-out cross-validation resulted in SR  $R^2$  values ca. 0.9 for all the years. The regression coefficients to build the model for statistical inference are shown in Table 7. In croplands, standardized residuals were normally distributed for all the datasets. D–W values were ca. 1.9, revealing independence of errors. The B–P test showed heteroscedasticity that was statistically significant. The leave-one-out cross-validation resulted in SR  $R^2$  values ca. 0.6 for all the years. The regression coefficients to create the model for statistical inference are shown in Table 8. In croplands/natural vegetation mosaics, standardized residuals were not normally distributed in all the samples. D–W values ca. 1.8 showed independence of errors. The K test indicated heteroscedasticity that was statistically significant. The leave-one-out cross-validation resulted in SR  $R^2$  values ca. 0.4 for all the years. The regression coefficients to generate the model for statistical inference are shown in Table 9.

**Table 7.** Regression coefficients with heteroscedasticity-consistent standard errors for grasslands. Const: Constant, Ln N dep: Natural logarithm of N deposition, Temp: Temperature, Precip: Precipitation, and Sunsh: Sunshine. \*\*\* Statistically significant  $p < 0.001$ .

	2000		2007		2010	
	Coefficients	95% CI	Coefficients	95% CI	Coefficients	95% CI
Const	$-0.8075^{***} \pm 0.0704$	$-0.9456 - -0.6695$	$0.1089 \pm 0.0971$	$-0.0815 - 0.2994$	$0.0783 - 0.0587$	$-0.0367 - 0.1934$
Ln N dep	$0.6270^{***} \pm 0.0121$	$0.6033 - 0.6507$	$0.5469^{***} \pm 0.0136$	$0.5201 - 0.5736$	$0.6095^{***} \pm 0.0119$	$0.5862 - 0.6329$
Precip	$-0.0002^{***} \pm 0.0000$	—	$-0.0003^{***} \pm 0.0000$	—	$-0.0003^{***} \pm 0.0000$	—
Sunsh	$0.0075^{***} \pm 0.0013$	$0.0051 - 0.0100$	$-0.0057^{***} \pm 0.0016$	$-0.0088 - -0.0026$	$-0.0066^{***} \pm 0.0010$	$-0.0086 - -0.0047$
Temp	$0.0103^{***} \pm 0.0018$	$0.0068 - 0.0139$	$0.0279^{***} \pm 0.0020$	$0.0240 - 0.0319$	$0.0123^{***} \pm 0.0016$	$0.0091 - 0.0155$

**Table 8.** Regression coefficients with heteroscedasticity-consistent standard errors for croplands. Const: Constant, N dep: N deposition (natural logarithm of N deposition only used in 2000), Temp: Temperature, Precip: Precipitation, and Sunsh: Sunshine. \*\* Statistically significant  $p < 0.01$ . \*\*\* Statistically significant  $p < 0.001$ .

	2000		2007		2010	
	Coefficients	95% CI	Coefficients	95% CI	Coefficients	95% CI
Const	$-0.1581 \pm 0.0783$	$-0.3116 - -0.0046$	$0.5791^{***} \pm 0.0123$	$0.5549 - 0.6033$	$1.018^{***} \pm 0.0540$	$0.9123 - 1.124$
N dep	$0.4115^{***} \pm 0.0114$	$0.3891 - 0.4338$	$0.0197^{***} \pm 0.0008$	$0.0181 - 0.0212$	$0.0185^{***} \pm 0.0009$	$0.0168 - 0.0203$
Precip	$-0.0001^{***} \pm 0.0000$	—	—	—	$-0.0001^{***} \pm 0.0000$	—
Sunsh	$0.004^{**} \pm 0.0012$	$0.0017 - 0.0064$	—	—	$-0.0062^{***} \pm 0.0011$	$-0.0083 - -0.0042$
Temp	—	—	$0.0192^{***} \pm 0.0017$	$0.0158 - 0.0226$	$0.0104^{***} \pm 0.0017$	$0.0070 - 0.0138$

**Table 9.** Regression coefficients with heteroscedasticity-consistent standard errors for croplands/natural vegetation mosaic. Const: Constant, N dep: N deposition, Temp: Temperature, Precip: Precipitation, and Sunsh: Sunshine. \*\*\* Statistically significant  $p < 0.001$ .

	2000		2007		2010	
	Coefficients	95% CI	Coefficients	95% CI	Coefficients	95% CI
Const	$1.077^{***} \pm 0.0175$	$1.042 - 1.111$	$0.9787^{***} \pm 0.0643$	$0.8527 - 1.1048$	$1.568^{***} \pm 0.0478$	$1.475 - 1.662$
N dep	$0.0167^{***} \pm 0.0006$	$0.0154 - 0.0179$	$0.0123^{***} \pm 0.0008$	$0.0107 - 0.0138$	$0.0138^{***} \pm 0.0007$	$0.0123 - 0.0152$
Precip	$-0.0001^{***} \pm 0.0000$	—	$0.0001^{***} \pm 0.0000$	—	$-0.0001^{***} \pm 0.0000$	—
Sunsh	—	—	$-0.0041^{***} \pm 0.0010$	$-0.0061 - -0.0021$	$-0.0120^{***} \pm 0.0010$	$-0.0139 - -0.0101$
Temp	—	—	$0.0205^{***} \pm 0.0022$	$0.0161 - 0.0248$	—	—

### 3.2. Soil Characteristics Per Land Cover Class

The zonal-statistics analysis using the digital soil suitability map characterized the aptitude for croplands, stone content, and water and nutrient storage capacity of the three land cover classes. The results indicated that the land cover class grasslands were mostly located in areas inappropriate for agriculture. The majority of the values of this land cover class, with regard to stone content and water and nutrient storage capacity, resulted in the category unknown. However, the visual inspection of the digital soil suitability map for Switzerland [70] reveals that the Alps are characterized by extremely low, very low, and low water and nutrient storage capacity values. Croplands were mainly placed in areas with very good aptitude for agriculture production, slightly stony, and with good water and nutrient storage capacity. Croplands/natural vegetation mosaic were mostly characteristic of stony areas inappropriate for agriculture, with good water and nutrient storage capacity.

## 4. Discussion

### *GPP Response to Limiting Factors Per Land Cover Class: Statistical Analysis*

N deposition achieved a higher predictive power of GPP response than climatic factors, especially in alpine grasslands. However, the observed non-linear relationships between N deposition and GPP in grasslands for all the years suggest plant N saturation even at the observed low N deposition rates. Grasslands are more sensitive to plant N saturation than other ecosystems, which produces non-linear primary productivity responses at lower N saturation thresholds [71]. Non-linear responses change according to climate factors and soil conditions [72].

The correlations between climatic factors and GPP shown in our study are in line with the modelling results of Beer, et al. [6] for Switzerland. In particular, we found a low correlation between precipitation and GPP. Nevertheless, this climatic factor was relevant to generate the models. Therefore, analyzing the correlation results was key to determining the role of this variable in the considered years (Figure 2 and Appendix A, Tables A1–A3). We also found a positive correlation between N deposition and temperature—such a correlation was also reported by Maskell, et al. [73]. Notwithstanding temperature was a relevant factor to explain GPP variance in the years 2000, 2007, and 2010, a higher correlation between N deposition and GPP as well as the collinearity threshold produced that N deposition overshadowed the role of temperature in the models. Therefore, studying how limiting factors of GPP interact among them is key before drawing conclusions from statistical models. Moreover, the comparison of results among years shows how the magnitude of influence of those limiting factors can vary. We also reported negative correlations between sunshine and GPP. Beer, et al. [6] suggested that this negative correlation occurs because sun radiation may induce evapotranspiration, which affects water availability and limit GPP. Besides, productivity may increase with diffuse sun radiation produced by the complex topography and cloudy conditions. Baptist and Choler [74] also observed this relationship, comparing the impact of overcast and cloudless conditions on C assimilation in alpine meadows. On the other hand, growth cycles constrained by altitudinal gradients may result in lower seasonal GPP values [74]. Nevertheless, Zeeman, et al. [75] concluded that accounting for the growing season length and management period do not improve GPP estimations in grasslands managed at different elevations in Switzerland. The MODIS land cover classes considered in our study spread across a wide altitudinal range in which different growing seasons occur within the same land cover class (see Section 2.2.1). Therefore, we consider the use of annual values appropriated to carry out our analysis. In particular, grasslands have a standard growing season from February to November [76].

The predictive performance of N deposition decreased in croplands and croplands/natural vegetation mosaics. Legume-based crops (grassland in rotation) that reach high rates of N inputs through N<sub>2</sub> fixation can maintain a moderate-high level of productivity in the long-term [77]. Moreover, areas with high intensity of use have additional input of nutrients, and therefore modelled N deposition may play a less relevant role to predict GPP response. In addition, the class croplands/natural vegetation mosaic is widely located in the Jura mountains, which is characterized by various management practices.

In particular, extensification processes that decrease biodiversity of woody pastures have occurred on remote areas of the Jura mountains, while high intensity of use practices have contributed to preserving biodiversity on the proximity of populated zones [47,78]. Therefore, the low influence of N deposition in GPP response could be explained by complex biosphere-atmosphere interactions triggered by mixed management practices and high species richness [79–81]. In particular, Bassin, et al. [23] showed that N deposition could enhance, diminish, or not affect the productivity of certain species in abundant plant communities. Abiotic and biotic factors mediate N deposition effects in terrestrial ecosystems, producing different impacts among biomes [82]. Consequently, different results are expected in areas with different management practices and water and nutrient storage capacity.

## 5. Outlook

High N input through animal manure, mineral fertilizer, and N deposition are common in croplands and can produce nutrient leaching and eutrophication of surface waters [83–85]. In Switzerland, N deposition is the source that provides the least amount of N inputs in agricultural soils [19]. However, critical loads (threshold below which adverse environmental effects do not occur according to present knowledge) of N deposition have been exceeded in most of the forest and semi-natural ecosystems [59]. Despite N deposition decreasing since the mid-1990s, N deposition remains still too high in many areas [60]. In particular, the highest N exceedances occur in the lowlands where intensive management practices lead to high ammonia emissions because of high manure inputs [59,86]. In our study, the predictive performance of N deposition decreased in those areas with high intensity of use. N can stimulate growth differently according to species-specific physiology and other co-limiting nutrients, such as phosphorous and potassium [23,87]. However, in those cultivated areas, growth is regulated by specific management practices. Detailed information about management practices (e.g., fertilization and irrigation), soil components, and crop types could shed light on the impact of N deposition on C fixation response in managed areas. Therefore, we recommend further research in that field. Determining nutrient balance helps characterize N dynamics and the influence of nutrient sources in managed agroecosystems [88,89].

On the other hand, N can be a driver, not only of biomass but also of ecosystem respiration in grasslands and croplands, which can turn C sinks into sources [10,90,91]. In addition, controlling factors of GPP response can have opposite effects. For example, low quantities of N deposition promote C storage while high temperatures produce C losses [24,92]. Taking into account these interactions is of utter importance because of ever more frequent extreme climatic episodes worldwide. Therefore, quantifying the impact of N deposition on the C budget together with other factors, such as land management practices and extreme climatic events, is crucial to understanding ecosystem processes. The emission-based model adopted in this study to quantify N deposition provided good estimates for large areas and produced similar results when compared with alternative methods [60]. Therefore, this approach is considered a reliable source of information for studies carried out at a national scale. In addition, we suggest the development of further lines of research, taking into account the climate inter-annual variability in the study areas, which could provide answers to the low correlation found between precipitation and GPP. Model simulations have shown the importance of coupling N and C cycles to account for vegetation dynamics and to improve global patterns of C and N fluxes [93,94]. There are still limitations on modelling sources of fixed N and land management changes, as well as coupling terrestrial C and N cycles [95,96]. Nevertheless, we expect our study to contribute to the inclusion of N deposition datasets in Earth system models to better account for N dynamics. This could improve predictions of C uptake in different ecosystems [97–99].

## 6. Conclusions

Our study emphasizes the importance of studying how limiting factors of GPP response relate among them and to GPP to derive conclusions about their explanatory performance. We showed the role of N deposition in explaining GPP variance in soils with low nutrient storage capacity and how



these areas present plant N saturation. The most important climatic variable to build all the models was precipitation. Temperature and sunshine were occasionally relevant in specific years. However, temperature was the variable with the second highest correlation with GPP. Therefore, interactions among controlling factors need to be taken into account before drawing conclusions from the final set of explanatory variables selected by a model.

This study contributes to characterizing large spatial patterns of GPP in Switzerland and how controlling factors vary in areas with complex topography affected by local climatic conditions and different land management patterns. However, we recommend developing further research lines to disentangle the impact of controlling factors on GPP variance in ecosystems with high intensity of use, mixed management practices, and high species richness as well as the role of precipitation in GPP response in the study area. Finally, we foster accounting for N dynamics and land management practices in conjunction with climatic factors in C budget models to improve our understanding of complex ecosystem processes.

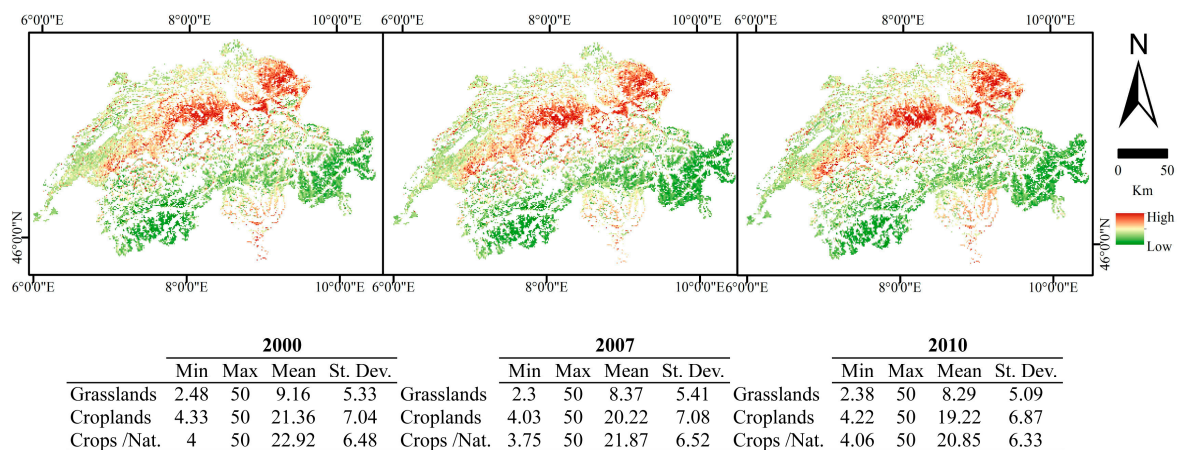
**Author Contributions:** Conceptualization: M.G.G., R.d.J., A.K., M.E.S.; data curation: M.G.G., R.d.J., B.R.; formal analysis: M.G.G.; funding acquisition: R.d.J., A.K., M.E.S.; investigation: M.G.G.; methodology: M.G.G., R.d.J., M.E.S.; project administration: A.K., M.E.S.; resources: A.K., M.E.S.; software: M.G.G.; supervision: R.d.J., A.K., M.E.S.; validation: M.G.G.; visualization: M.G.G.; writing—original draft: M.G.G.; writing—review and editing: M.G.G., R.d.J., A.K., B.R., M.E.S.

**Funding:** This study was a part of the “Integrated modelling framework to monitor and predict trends of agricultural management and their impact on soil functions at multiple scales” (iMSoil) under Project 406840-143062 funded by the Swiss National Science Foundation within the National Resource Program NRP68 “Sustainable Use of Soil as a Resource” ([www.nfp68.ch](http://www.nfp68.ch)).

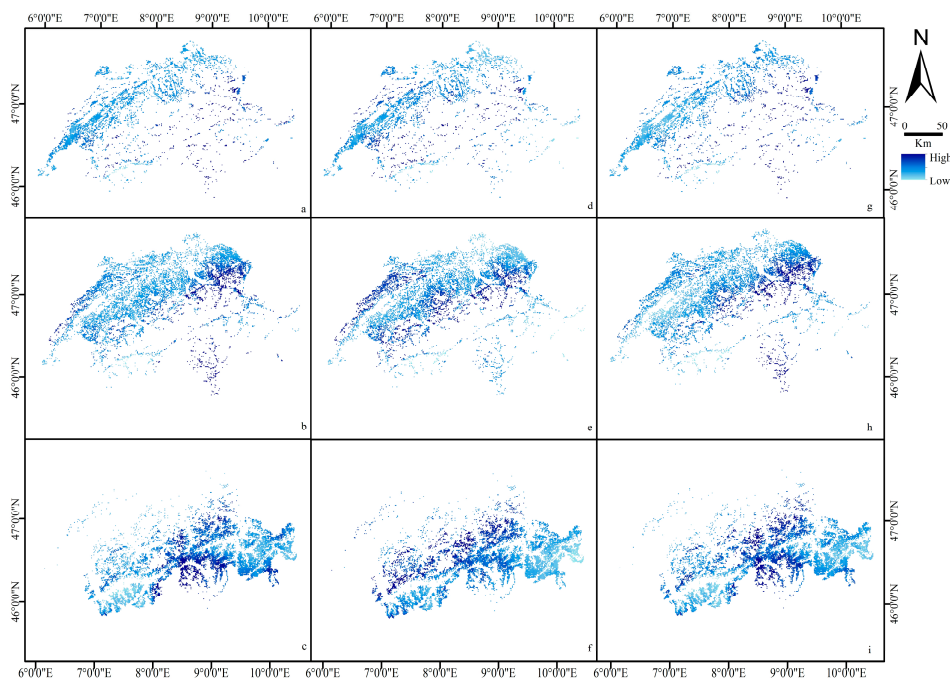
**Acknowledgments:** The University of Zurich Research Priority Program on “Global Change and Biodiversity” supported the work of M.E. Schaeppman; Beat Rihm (Meteotest) supplied N deposition datasets adapted to cropland and grassland; the Swiss Federal Office for the Environment (FOEN) is the owner of the N deposition data.

**Conflicts of Interest:** The authors declare no conflict of interest.

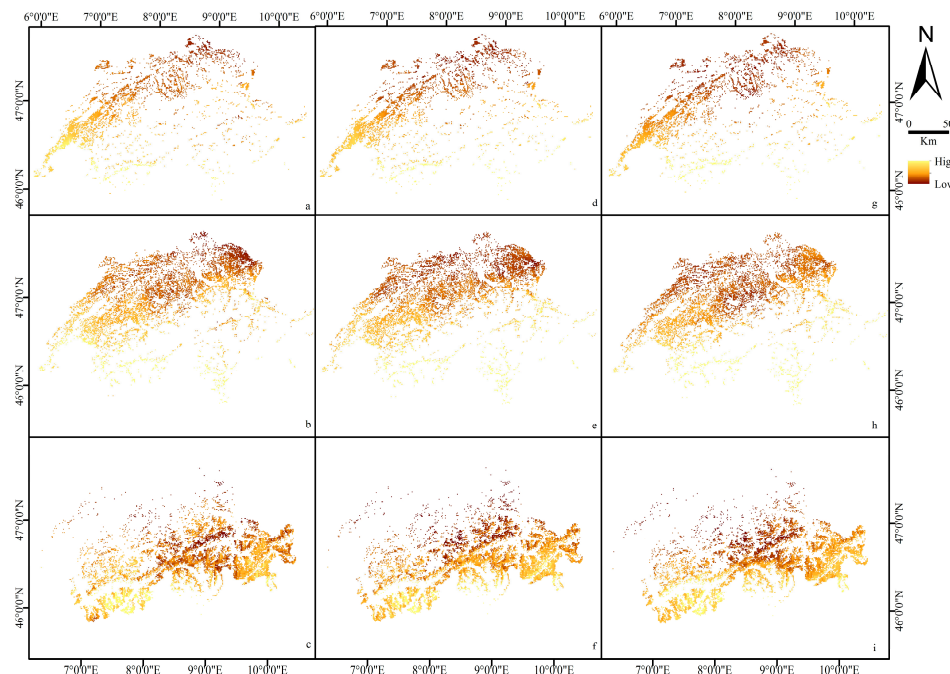
### Appendix A



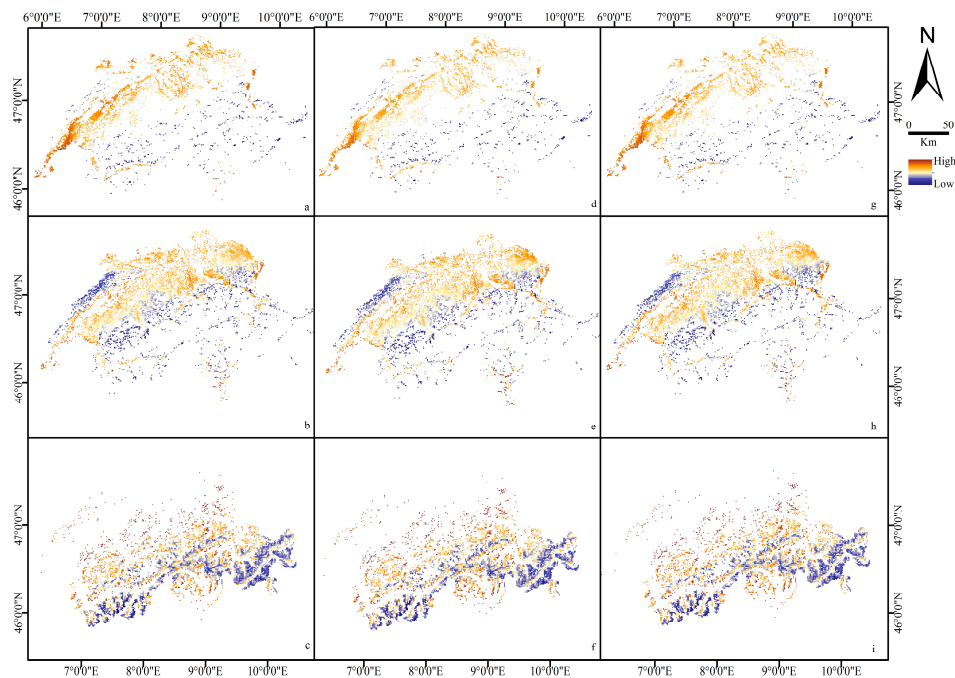
**Figure A1.** Spatial variability and statistics of Nitrogen deposition maps per year. Units: kg N/ ha year.



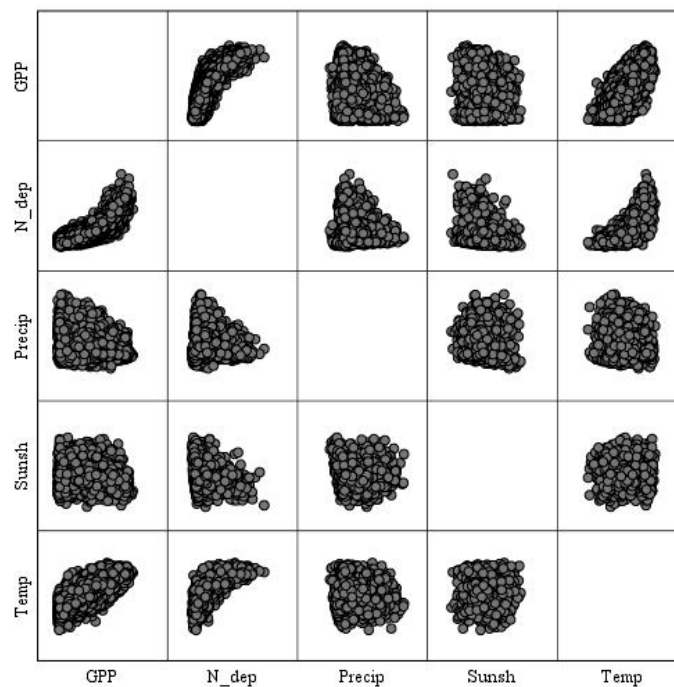
**Figure A2.** Spatial variability of yearly-accumulated precipitation: (a–c) croplands (455–3490 mm/year), croplands/natural vegetation mosaic (469–3472 mm/year), and grasslands (534–3825 mm/year), respectively, for the year 2000; (d–f) croplands (530–2919 mm/year), croplands/natural vegetation mosaic (530–2676 mm/year), and grasslands (528–4008 mm/year), respectively, for the year 2007; and (g–i) croplands (382–2860 mm/year), croplands/natural vegetation mosaic (386–2793 mm/year), and grasslands (447–3245 mm/year), respectively, for the year 2010.



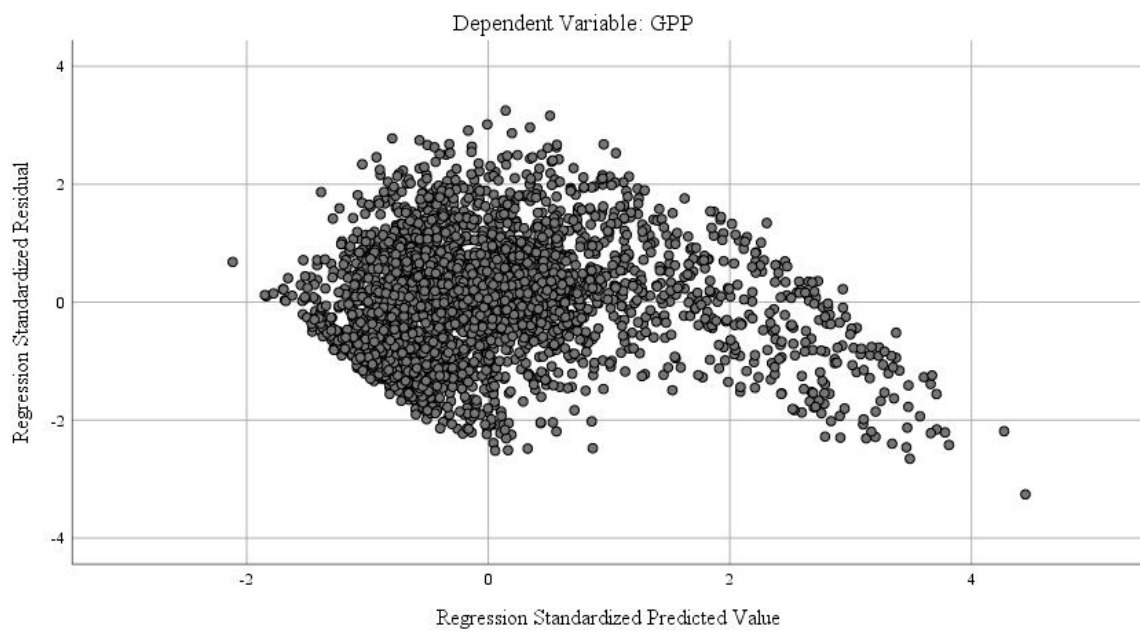
**Figure A3.** Spatial variability of yearly relative sunshine duration: (a–c) croplands (36–57%), croplands/natural vegetation mosaic (36–57%), and grasslands (36–57%), respectively, for the year 2000; (d–f) croplands (40–61%), croplands/natural vegetation mosaic (40–62%), and grasslands (41–63%), respectively, for the year 2007; and (g–i) croplands (35–56%), croplands/natural vegetation mosaic (34–55%), and grasslands (35–55%), respectively, for the year 2010.



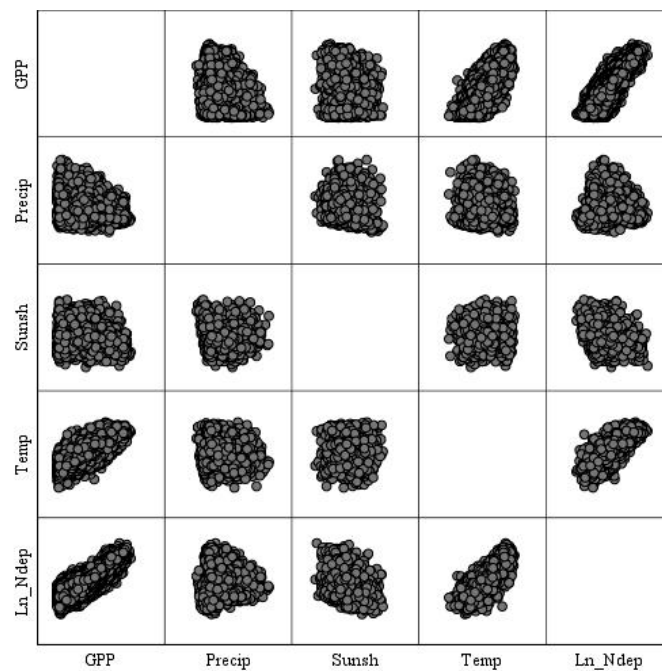
**Figure A4.** Spatial variability of yearly mean temperature: (a–c) croplands (–4–12 °C), croplands/natural vegetation mosaic (—13 °C), and grasslands (–9–14 °C), respectively, for the year 2000; (d–f) croplands (–4–13 °C), croplands/natural vegetation mosaic (–4–13 °C), and grasslands (–9–15 °C), respectively, for the year 2007; and (g–i) croplands (–6–12 °C), croplands/natural vegetation mosaic (–5–12 °C), and grasslands (–10–13 °C), respectively, for the year 2010.



**Figure A5.** Correlation matrix using the original values of N deposition for the class grasslands and the year 2000.

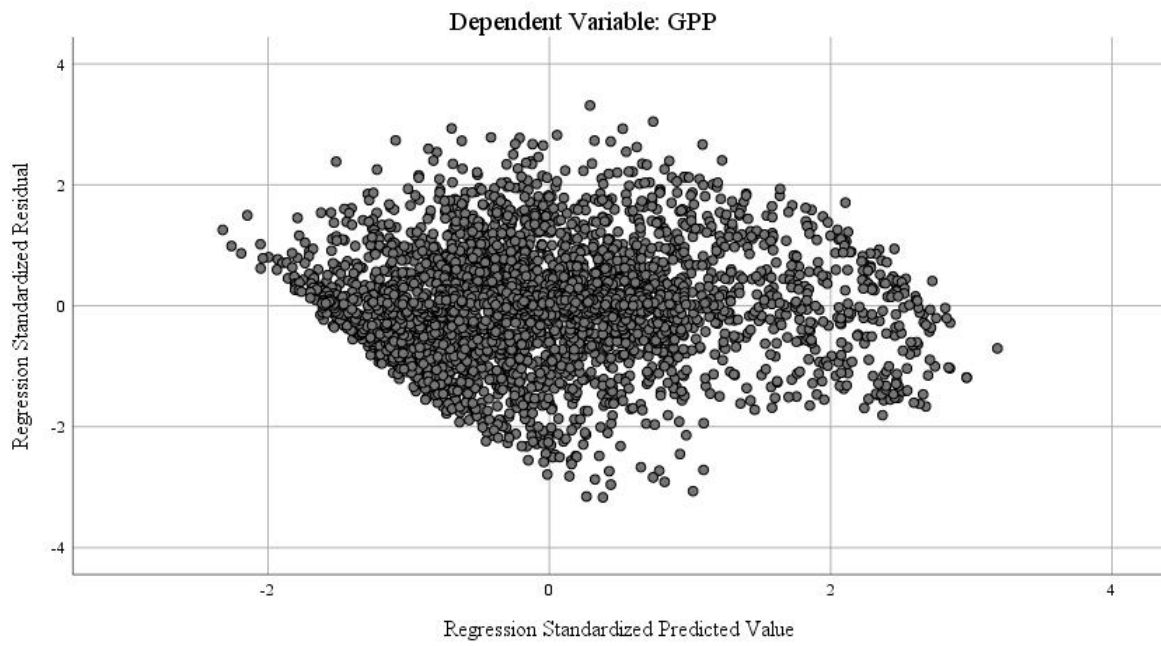


**Figure A6.** Scatterplot of the standardized residuals and the standardized predicted values using the original values of the class grasslands for the year 2000.



**Figure A7.** Correlation matrix using the natural logarithm of N deposition for the class grasslands and the year 2000.





**Figure A8.** Scatterplot of the standardised residuals and the standardised predicted values using the natural logarithm of N deposition for the class grasslands and the year 2000.

**Table A1.** Pearson's correlation between GPP: Gross primary productivity and Ln N dep: Natural logarithm of N deposition, Temp: Temperature, Precip: Precipitation, and Sunsh: Sunshine, based on a bootstrap of 1000 samples per land cover class and year. \*\* Statistically significant  $p < 0.01$ .

Grasslands						
	GPP 2000		GPP 2007		GPP 2010	
	Pearson Correlation	95% CI	Pearson Correlation	95% CI	Pearson Correlation	95% CI
Ln N dep	0.823 ** $\pm$ 0.006	0.811—0.833	0.798 ** $\pm$ 0.006	0.786—0.811	0.813 ** $\pm$ 0.006	0.801—0.824
Temp	0.741 ** $\pm$ 0.008	0.724—0.756	0.749 ** $\pm$ 0.008	0.734—0.763	0.748 ** $\pm$ 0.008	0.733—0.763
Precip	-0.220 ** $\pm$ 0.016	-0.250—-0.190	0.059 ** $\pm$ 0.017	0.026—0.092	-0.035 ** $\pm$ 0.017	-0.069—-0.001
Sunsh	-0.121 ** $\pm$ 0.019	-0.158—-0.086	-0.233 ** $\pm$ 0.018	-0.270—-0.197	-0.291 ** $\pm$ 0.018	-0.325—-0.256

**Table A2.** Pearson's correlation between GPP: Gross primary productivity and N dep: N deposition (natural logarithm used only for the year 2000), Temp: Temperature, Precip: Precipitation, and Sunsh: Sunshine, based on a bootstrap of 1000 samples per land cover class and year. \*\* Statistically significant  $p < 0.01$ .

Croplands						
	GPP 2000		GPP 2007		GPP 2010	
	Pearson Correlation	95% CI	Pearson Correlation	95% CI	Pearson Correlation	95% CI
N dep	0.664 ** $\pm$ 0.011	0.643—0.687	0.615 ** $\pm$ 0.013	0.590—0.640	0.588 ** $\pm$ 0.013	0.560—0.616
Temp	0.527 ** $\pm$ 0.015	0.499—0.554	0.487 ** $\pm$ 0.016	0.455—0.518	0.477 ** $\pm$ 0.016	0.445—0.508
Precip	-0.383 ** $\pm$ 0.018	-0.418—-0.347	-0.164 ** $\pm$ 0.023	-0.208—-0.115	-0.236 ** $\pm$ 0.021	-0.276—-0.195
Sunsh	-0.243 ** $\pm$ 0.018	-0.278—-0.207	-0.307 ** $\pm$ 0.019	-0.346—-0.268	-0.387 ** $\pm$ 0.016	-0.419—-0.357

**Table A3.** Pearson's correlation between GPP: Gross primary productivity and N dep: N deposition, Temp: Temperature, Precip: Precipitation, and Sunsh: Sunshine, based on a bootstrap of 1000 samples per land cover class and year. \* Statistically significant  $p < 0.05$  \*\* Statistically significant  $p < 0.01$ .

Croplands/Natural Vegetation Mosaic						
	GPP 2000		GPP 2007		GPP 2010	
	Pearson Correlation	95% CI	Pearson Correlation	95% CI	Pearson Correlation	95% CI
N dep	0.411 ** $\pm$ 0.013	0.384—0.438	0.375 ** $\pm$ 0.014	0.349—0.405	0.377 ** $\pm$ 0.014	0.349—0.405
Temp	0.245 ** $\pm$ 0.017	0.212—0.277	0.220 ** $\pm$ 0.017	0.187—0.253	0.192 ** $\pm$ 0.017	0.160—0.226
Precip	-0.173 ** $\pm$ 0.016	-0.202—-0.141	0.068 ** $\pm$ 0.016	0.037—0.100	-0.040 * $\pm$ 0.016	-0.074—-0.008
Sunsh	-0.215 ** $\pm$ 0.014	-0.244—-0.186	-0.229 ** $\pm$ 0.015	-0.259—-0.198	-0.320 ** $\pm$ 0.014	-0.348—-0.293

## References

1. Lal, R. Soil Carbon Sequestration Impacts on Global Climate Change and Food Security. *Science* **2004**, *304*, 1623–1627. [[CrossRef](#)]
2. Chapin, F.S., III; Woodwell, G.M.; Randerson, J.T.; Rastetter, E.B.; Lovett, G.M.; Baldocchi, D.D.; Clark, D.A.; Harmon, M.E.; Schimel, D.S.; Valentini, R.; et al. Reconciling Carbon-Cycle Concepts, Terminology, and Methods. *Ecosystems* **2006**, *9*, 1041–1050. [[CrossRef](#)]
3. Anav, A.; Friedlingstein, P.; Beer, C.; Ciais, P.; Harper, A.; Jones, C.; Murray-Tortarolo, G.; Papale, D.; Parazoo, N.C.; Peylin, P.; et al. Spatiotemporal patterns of terrestrial gross primary production: A review. *Rev. Geophys.* **2015**, *53*, 785–818. [[CrossRef](#)]
4. Monfreda, C.; Ramankutty, N.; Foley, J.A. Farming the planet: 2. Geographic distribution of crop areas, yields, physiological types, and net primary production in the year 2000. *Glob. Biogeochem. Cycles* **2008**, *22*. [[CrossRef](#)]
5. Zhang, Y.; Yu, G.; Yang, J.; Wimberly, M.C.; Zhang, X.; Tao, J.; Jiang, Y.; Zhu, J. Climate-driven global changes in carbon use efficiency. *Glob. Ecol. Biogeogr.* **2014**, *23*, 144–155. [[CrossRef](#)]
6. Beer, C.; Reichstein, M.; Tomelleri, E.; Ciais, P.; Jung, M.; Carvalhais, N.; Rödenbeck, C.; Arain, M.A.; Baldocchi, D.; Bonan, G.B.; et al. Terrestrial gross carbon dioxide uptake: Global distribution and covariation with climate. *Science* **2010**, *329*, 834–838. [[CrossRef](#)] [[PubMed](#)]
7. Liu, D.; Li, Y.; Wang, T.; Peylin, P.; MacBean, N.; Ciais, P.; Jia, G.; Ma, M.; Ma, Y.; Shen, M.; et al. Contrasting responses of grassland water and carbon exchanges to climate change between Tibetan Plateau and Inner Mongolia. *Agric. For. Meteorol.* **2018**, *249*, 163–175. [[CrossRef](#)]
8. Verstraeten, W.W.; Veroustraete, F.; Feyen, J. On temperature and water limitation of net ecosystem productivity: Implementation in the C-Fix model. *Ecol. Model.* **2006**, *199*, 4–22. [[CrossRef](#)]
9. Stevens, C.J.; Lind, E.M.; Hautier, Y.; Harpole, W.S.; Borer, E.T.; Hobbie, S.; Seabloom, E.W.; Ladwig, L.; Bakker, J.D.; Chu, C.; et al. Anthropogenic nitrogen deposition predicts local grassland primary production worldwide. *Ecology* **2015**, *96*, 1459–1465. [[CrossRef](#)]
10. Volk, M.; Obrist, D.; Novak, K.; Giger, R.; Bassin, S.; Fuhrer, J. Subalpine grassland carbon dioxide fluxes indicate substantial carbon losses under increased nitrogen deposition, but not at elevated ozone concentration. *Glob. Chang. Biol.* **2011**, *17*, 366–376. [[CrossRef](#)]
11. De Vries, W.; Posch, M.; Simpson, D.; Reinds, G.J. Modelling long-term impacts of changes in climate, nitrogen deposition and ozone exposure on carbon sequestration of European forest ecosystems. *Sci. Total Environ.* **2017**, *605–606*, 1097–1116. [[CrossRef](#)] [[PubMed](#)]
12. Sun, Z.; Wang, X.; Yamamoto, H.; Tani, H.; Zhong, G.; Yin, S.; Guo, E. Spatial pattern of GPP variations in terrestrial ecosystems and its drivers: Climatic factors, CO<sub>2</sub> concentration and land-cover change, 1982–2015. *Ecol. Inform.* **2018**, *46*, 156–165. [[CrossRef](#)]
13. Freibauer, A.; Rounsevell, M.D.A.; Smith, P.; Verhagen, J. Carbon sequestration in the agricultural soils of Europe. *Geoderma* **2004**, *122*, 1–23. [[CrossRef](#)]
14. Smith, P. Carbon sequestration in croplands: The potential in Europe and the global context. *Eur. J. Agron.* **2004**, *20*, 229–236. [[CrossRef](#)]
15. Lal, R. Soil carbon sequestration to mitigate climate change. *Geoderma* **2004**, *123*, 1–22. [[CrossRef](#)]
16. LeBauer, D.S.; Treseder, K.K. Nitrogen limitation of net primary productivity in terrestrial ecosystems is globally distributed. *Ecology* **2008**, *89*, 371–379. [[CrossRef](#)] [[PubMed](#)]
17. Sala, O.E.; Stuart Chapin, F., III; Armesto, J.J.; Berlow, E.; Bloomfield, J.; Dirzo, R.; Huber-Sanwald, E.; Huenneke, L.F.; Jackson, R.B.; Kinzig, A.; et al. Global Biodiversity Scenarios for the Year 2100. *Science* **2000**, *287*, 1770–1774. [[CrossRef](#)]
18. Oehri, J.; Schmid, B.; Schaepman-Strub, G.; Niklaus, P.A. Biodiversity promotes primary productivity and growing season lengthening at the landscape scale. *Proc. Natl. Acad. Sci. USA* **2017**, *114*, 10160–10165. [[CrossRef](#)]
19. FSO, Agriculture and Forestry. *Swiss Agriculture. Pocket Statistics. Federal Statistics Office; Federal Department of Home Affairs: Neuchâtel, Switzerland, 2015; p. 36.* Available online: <https://www.bfs.admin.ch/bfs/en/home/statistics/agriculture-forestry.assetdetail.349914.html> (accessed on 29 May 2017).

20. FOAG. *Swiss Agricultural Policy*; Swiss Federal Office for Agriculture: Liebefeld, Switzerland, 2004; p. 16. Available online: <https://www.cbd.int/financial/pes/swiss-pesagriculturalpolicy.pdf> (accessed on 10 October 2016).
21. Hitz, C.; Egli, M.; Fitze, P. Below-ground and above-ground production of vegetational organic matter along a climosequence in alpine grasslands. *J. Plant Nutr. Soil Sci.* **2001**, *164*, 389–397. [[CrossRef](#)]
22. Leifeld, J.; Zimmermann, M.; Fuhrer, J.; Conen, F. Storage and turnover of carbon in grassland soils along an elevation gradient in the Swiss Alps. *Glob. Chang. Biol.* **2009**, *15*, 668–679. [[CrossRef](#)]
23. Bassin, S.; Volk, M.; Suter, M.; Buchmann, N.; Fuhrer, J. Nitrogen deposition but not ozone affects productivity and community composition of subalpine grassland after 3 yr of treatment. *New Phytol.* **2007**, *175*, 523–534. [[CrossRef](#)]
24. Bala, G.; Devaraju, N.; Chaturvedi, R.K.; Caldeira, K.; Nemani, R. Nitrogen deposition: How important is it for global terrestrial carbon uptake. *Biogeosciences* **2013**, *10*, 7147–7160. [[CrossRef](#)]
25. Zaehle, S. Terrestrial nitrogen-carbon cycle interactions at the global scale. *Philos. Trans. R. Soc. B Biol. Sci.* **2013**, *368*. [[CrossRef](#)] [[PubMed](#)]
26. Stocker, B.D.; Prentice, I.C.; Cornell, S.E.; Davies-Barnard, T.; Finzi, A.C.; Franklin, O.; Janssens, I.; Larmola, T.; Manzoni, S.; Näsholm, T.; et al. Terrestrial nitrogen cycling in Earth system models revisited. *New Phytol.* **2016**, *210*, 1165–1168. [[CrossRef](#)]
27. Chang, J.; Ciaia, P.; Viovy, N.; Vuichard, N.; Herrero, M.; Havlík, P.; Wang, X.; Sultan, B.; Soussana, J.-F. Effect of climate change, CO<sub>2</sub> trends, nitrogen addition, and land-cover and management intensity changes on the carbon balance of European grasslands. *Glob. Chang. Biol.* **2016**, *22*, 338–350. [[CrossRef](#)]
28. Running, S.W.; Nemani, R.R.; Heinsch, F.A.; Zhao, M.; Reeves, M.; Hashimoto, H. A continuous satellite-derived measure of global terrestrial primary production. *BioScience* **2004**, *54*, 547–560. [[CrossRef](#)]
29. Turner, D.P.; Ritts, W.D.; Cohen, W.B.; Gower, S.T.; Running, S.W.; Zhao, M.; Costa, M.H.; Kirschbaum, A.A.; Ham, J.M.; Saleska, S.R.; et al. Evaluation of MODIS NPP and GPP products across multiple biomes. *Remote Sens. Environ.* **2006**, *102*, 282–292. [[CrossRef](#)]
30. Turner, D.P.; Ritts, W.D.; Cohen, W.B.; Gower, S.T.; Zhao, M.; Running, S.W.; Wofsy, S.C.; Urbanski, S.; Dunn, A.L.; Munger, J.W. Scaling Gross Primary Production (GPP) over boreal and deciduous forest landscapes in support of MODIS GPP product validation. *Remote Sens. Environ.* **2003**, *88*, 256–270. [[CrossRef](#)]
31. Zhao, M.; Heinsch, F.A.; Nemani, R.R.; Running, S.W. Improvements of the MODIS terrestrial gross and net primary production global data set. *Remote Sens. Environ.* **2005**, *95*, 164–176. [[CrossRef](#)]
32. Zhao, M.; Running, S.W.; Nemani, R.R. Sensitivity of Moderate Resolution Imaging Spectroradiometer (MODIS) terrestrial primary production to the accuracy of meteorological reanalyses. *J. Geophys. Res. Biogeosci.* **2006**, *111*. [[CrossRef](#)]
33. Turner, D.P.; Ritts, W.D.; Cohen, W.B.; Maeirsperger, T.K.; Gower, S.T.; Kirschbaum, A.A.; Running, S.W.; Zhao, M.; Wofsy, S.C.; Dunn, A.L.; et al. Site-level evaluation of satellite-based global terrestrial gross primary production and net primary production monitoring. *Glob. Chang. Biol.* **2005**, *11*, 666–684. [[CrossRef](#)]
34. Heinsch, F.A.; Zhao, M.; Running, S.W.; Kimball, J.S.; Nemani, R.R.; Davis, K.J.; Bolstad, P.V.; Cook, B.D.; Desai, A.R.; Ricciuto, D.M.; et al. Evaluation of remote sensing based terrestrial productivity from MODIS using regional tower eddy flux network observations. *IEEE Trans. Geosci. Remote Sens.* **2006**, *44*, 1908–1923. [[CrossRef](#)]
35. Friedl, M.A.; Sulla-Menashe, D.; Tan, B.; Schneider, A.; Ramankutty, N.; Sibley, A.; Huang, X. MODIS Collection 5 global land cover: Algorithm refinements and characterization of new datasets. *Remote Sens. Environ.* **2010**, *114*, 168–182. [[CrossRef](#)]
36. Chen, Z.; Yu, G.; Zhu, X.; Wang, Q.; Niu, S.; Hu, Z. Covariation between gross primary production and ecosystem respiration across space and the underlying mechanisms: A global synthesis. *Agric. For. Meteorol.* **2015**, *203*, 180–190. [[CrossRef](#)]
37. Solberg, S.; Dobbertin, M.; Reinds, G.J.; Lange, H.; Andreassen, K.; Fernandez, P.G.; Hildingsson, A.; de Vries, W. Analyses of the impact of changes in atmospheric deposition and climate on forest growth in European monitoring plots: A stand growth approach. *For. Ecol. Manag.* **2009**, *258*, 1735–1750. [[CrossRef](#)]
38. Cerasoli, S.; Campagnolo, M.; Faria, J.; Nogueira, C.; Da Conceição Caldeira, M. On estimating the gross primary productivity of Mediterranean grasslands under different fertilization regimes using vegetation indices and hyperspectral reflectance. *Biogeosciences* **2018**, *15*, 5455–5471. [[CrossRef](#)]



39. FOEN. *Biogeographic regions of Switzerland (CH)*; Federal Office for the Environment Federal Office for Environment/Species, Ecosystems, Landscapes Division (FOEN): Ittigen, Switzerland, 2004; Available online: <https://map.geo.admin.ch/?lang=en&topic=bafu&X=190000.00&Y=660000.00&zoom=1&bgLayer=ch.swisstopo.pixelkarte-farbe&catalogNodes=766,767,784,798,804,806,768,781,1361> (accessed on 8 March 2017).
40. FSO. *Land Use in Switzerland. Results of the Swiss Land Use Statistics*; FSO: Neuchâtel, Switzerland, 2013; p. 24. Available online: <https://www.bfs.admin.ch/bfs/en/home/statistics/territory-environment.assetdetail.348992.html> (accessed on March 2018).
41. Gonseth, Y.; Wohlgemuth, T.; Sansonnens, B.; Buttler, A. *Les Régions Biogéographiques de la Suisse—Explications et Division Standard*; Cahier de l'environnement n° 137. Office fédéral de l'environnement, des forêts et du paysage; OFEFP: Berne, Switzerland, 2001; p. 48.
42. Bolliger, J.; Hagedorn, F.; Leifeld, J.; Böhl, J.; Zimmermann, S.; Soliva, R.; Kienast, F. Effects of land-use change on carbon stocks in Switzerland. *Ecosystems* **2008**, *11*, 895–907. [[CrossRef](#)]
43. Leifeld, J.; Bassin, S.; Fuhrer, J. Carbon stocks in Swiss agricultural soils predicted by land-use, soil characteristics, and altitude. *Agric. Ecosyst. Environ.* **2005**, *105*, 255–266. [[CrossRef](#)]
44. Kampmann, D.; Herzog, F.; Jeanneret, P.; Konold, W.; Peter, M.; Walter, T.; Wildi, O.; Lüscher, A. Mountain grassland biodiversity: Impact of site conditions versus management type. *J. Nat. Conserv.* **2008**, *16*, 12–25. [[CrossRef](#)]
45. Graf, R.; Müller, M.; Korner, P.; Jenny, M.; Jenni, L. 20% loss of unimproved farmland in 22 years in the Engadin, Swiss Alps. *Agric. Ecosyst. Environ.* **2014**, *185*, 48–58. [[CrossRef](#)]
46. Peringer, A.; Siehoff, S.; Chételat, J.; Spiegelberger, T.; Buttler, A.; Gillet, F. Past and future landscape dynamics in pasture-woodlands of the Swiss Jura Mountains under climate change. *Ecol. Soc.* **2013**, *18*, 11. [[CrossRef](#)]
47. Chételat, J.; Kalbermatten, M.; Lannas, K.S.M.; Spiegelberger, T.; Wettstein, J.-B.; Gillet, F.; Peringer, A.; Buttler, A. A Contextual Analysis of Land-Use and Vegetation Changes in Two Wooded Pastures in the Swiss Jura Mountains. *Ecol. Soc.* **2013**, *18*, 39. [[CrossRef](#)]
48. Gavazov, K.S.; Peringer, A.; Buttler, A.; Gillet, F.; Spiegelberger, T. Dynamics of forage production in pasture-woodlands of the Swiss Jura mountains under projected climate change scenarios. *Ecol. Soc.* **2013**, *18*. [[CrossRef](#)]
49. Meteoswiss, Climate of Switzerland. 2014. Available online: <http://www.meteoswiss.admin.ch/home/climate/the-climate-of-switzerland.html> (accessed on 8 March 2017).
50. Meteoswiss, Climate Change in Switzerland. 2015. Available online: [http://www.meteoswiss.admin.ch/content/dam/meteoswiss/de/Ungebundene-Seiten/Publikationen/doc/mch\\_klimawandel\\_63-13\\_high.pdf](http://www.meteoswiss.admin.ch/content/dam/meteoswiss/de/Ungebundene-Seiten/Publikationen/doc/mch_klimawandel_63-13_high.pdf) (accessed on 26 March 2018).
51. Running, S.W.; Zhao, M. *Gross Primary Productivity 8-Day LA Global 1Km (MOD17A2), v 5.0 and 5.5 NASA EOSDIS Land Processes DAAC*; USGS Earth Resources Observation and Science (EROS) Center: Sioux Falls, South Dakota, 2000. Available online: <https://lpdaac.usgs.gov> (accessed on 16 January 2017).
52. Running, S.W.; Zhao, M. *User's Guide Daily GPP and Annual NPP (MOD17A2/A3) Products NASA Earth Observing System MODIS Land Algorithm*; NASA MODIS Land Team: Greenbelt, MD, USA.
53. Kooistra, L.; Bergsma, A.; Chuma, B.; de Bruin, S. Development of a dynamic web mapping service for vegetation productivity using earth observation and in situ sensors in a sensor web based approach. *Sensors* **2009**, *9*, 2371–2388. [[CrossRef](#)]
54. Weiskittel, A.R.; Crookston, N.L.; Radtke, P.J. Linking climate, gross primary productivity, and site index across forests of the western United States. *Can. J. For. Res.* **2011**, *41*, 1710–1721. [[CrossRef](#)]
55. Zhang, Y.; Song, C.; Zhang, K.; Cheng, X.; Zhang, Q. Spatial-temporal variability of terrestrial vegetation productivity in the Yangtze River Basin during 2000–2009. *J. Plant Ecol.* **2014**, *7*, 10–23. [[CrossRef](#)]
56. Swisstopo. *Digital Height Model, SwissALTI3D*; Federal Office of Topography: Köniz, Switzerland, 2015; Available online: [https://shop.swisstopo.admin.ch/de/products/height\\_models/alti3D](https://shop.swisstopo.admin.ch/de/products/height_models/alti3D) (accessed on 25 May 2017).
57. FOEN. *Nitrogen Deposition. Meteotest and Federal Office of the Environment*; Federal Office for the Environment (FOEN): Ittigen, Switzerland, 2016; Available online: <https://www.bafu.admin.ch/bafu/en/home/topics/air/state/data/historical-data/maps-of-annual-values/map-of-nitrogen-deposition.html> (accessed on 2 March 2017).

58. FSO. *Swiss Land-Use Statistics, ha-grid (Arealstatistik Schweiz)*; Federal Statistical Office: Neuchâtel, Switzerland, 2005; Available online: <https://www.bfs.admin.ch/bfs/de/home/statistiken/raum-umwelt/erhebungen/area.html> (accessed on 5 May 2017).
59. Rihm, B.; Achermann, B. *Critical Loads of Nitrogen and Their Exceedances*; Swiss Contribution to the Effects-Oriented Work under the Convention on Long-Range Transboundary Air Pollution (UNECE); Federal Office for the Environment: Ittigen, Switzerland, 2016; p. 78. Available online: <https://www.bafu.admin.ch/bafu/en/home/topics/air/publications-studies/publications/Critical-Loads-of-Nitrogen-and-their-Exceedances.html> (accessed on 26 May 2017).
60. Thimonier, A.; Kosonen, Z.; Braun, S.; Rihm, B.; Schleppe, P.; Schmitt, M.; Seitler, E.; Waldner, P.; Thöni, L. Total deposition of nitrogen in Swiss forests: Comparison of assessment methods and evaluation of changes over two decades. *Atmos. Environ.* **2019**, *198*, 335–350. [CrossRef]
61. Meteoswiss. *MeteoSwiss Grid-Data Products*; Meteoswiss: Zurich-Airport, Switzerland, 2013; Available online: <http://www.meteoswiss.admin.ch/home/climate/swiss-climate-in-detail/monthly-and-annual-maps.html?query=Grid-Data+products> (accessed on 26 March 2018).
62. Meteoswiss. *Monthly and Yearly Mean Temperature: TabsM and TabsY*; Meteoswiss: Zurich-Airport, Switzerland, 2016; Available online: [http://www.meteoswiss.admin.ch/content/dam/meteoswiss/de/service-und-publikationen/produkt/raeumliche-daten-temperatur/doc/ProdDoc\\_TabsM.pdf](http://www.meteoswiss.admin.ch/content/dam/meteoswiss/de/service-und-publikationen/produkt/raeumliche-daten-temperatur/doc/ProdDoc_TabsM.pdf) (accessed on 26 March 2018).
63. Meteoswiss. *Monthly and Yearly Precipitation: RhiresM and RhiresY*; Meteoswiss: Zurich-Airport, Switzerland, 2016; Available online: [http://www.meteoswiss.admin.ch/content/dam/meteoswiss/de/service-und-publikationen/produkt/raeumliche-daten-niederschlag/doc/ProdDoc\\_RhiresM.pdf](http://www.meteoswiss.admin.ch/content/dam/meteoswiss/de/service-und-publikationen/produkt/raeumliche-daten-niederschlag/doc/ProdDoc_RhiresM.pdf) (accessed on 26 March 2018).
64. Meteoswiss. *Monthly and Yearly Relative Sunshine Duration: SrelM and SrelY*; Meteoswiss: Zurich-Airport, Switzerland, 2016; Available online: [http://www.meteoswiss.admin.ch/content/dam/meteoswiss/de/service-und-publikationen/produkt/raeumliche-daten-sonnenschein/doc/ProdDoc\\_SrelM.pdf](http://www.meteoswiss.admin.ch/content/dam/meteoswiss/de/service-und-publikationen/produkt/raeumliche-daten-sonnenschein/doc/ProdDoc_SrelM.pdf) (accessed on 26 March 2018).
65. Darlington, R.B.; Hayes, A.F. *Regression Analysis and Linear Models: Concepts, Applications, and Implementation*; Guilford Publications: New York, NY, USA, 2016.
66. James, G.; Witten, D.; Hastie, T.; Tibshirani, R. Linear Regression. In *An Introduction to Statistical Learning: With Applications in R*; Springer New York: New York, NY, USA, 2013; pp. 59–126.
67. Midi, H.; Sarkar, S.K.; Rana, S. Collinearity diagnostics of binary logistic regression model. *J. Interdiscip. Math.* **2010**, *13*, 253–267. [CrossRef]
68. Dormann, C.F.; Elith, J.; Bacher, S.; Buchmann, C.; Carl, G.; Carré, G.; Marquéz, J.R.G.; Gruber, B.; Lafourcade, B.; Leitão, P.J.; et al. Collinearity: A review of methods to deal with it and a simulation study evaluating their performance. *Ecography* **2013**, *36*, 27–46. [CrossRef]
69. Hayes, A.F.; Cai, L. Using heteroskedasticity-consistent standard error estimators in OLS regression: An introduction and software implementation. *Behav. Res. Methods* **2007**, *39*, 709–722. [CrossRef] [PubMed]
70. FOAG. *Digital Soil Suitability Map of Switzerland*; Federal Office for Agriculture (FOAG): Liebefeld, Switzerland, 1980; Available online: <https://www.blw.admin.ch/blw/de/home/politik/datenmanagement/geografisches-informationssystem-gis/download-geodaten.html> (accessed on 1 February 2017).
71. Tian, D.; Wang, H.; Sun, J.; Niu, S. Global evidence on nitrogen saturation of terrestrial ecosystem net primary productivity. *Environ. Res. Lett.* **2016**, *11*. [CrossRef]
72. Ye, J.S.; Pei, J.Y.; Fang, C. Under which climate and soil conditions the plant productivity–precipitation relationship is linear or nonlinear? *Sci. Total Environ.* **2018**, *616–617*, 1174–1180. [CrossRef]
73. Maskell, L.C.; Smart, S.M.; Bullock, J.M.; Thompson, K.; Stevens, C.J. Nitrogen deposition causes widespread loss of species richness in British habitats. *Glob. Chang. Biol.* **2010**, *16*, 671–679. [CrossRef]
74. Baptist, F.; Choler, P. A simulation of the importance of length of growing season and canopy functional properties on the seasonal gross primary production of temperate alpine meadows. *Ann. Bot.* **2008**, *101*, 549–559. [CrossRef] [PubMed]
75. Zeeman, M.J.; Hiller, R.; Gilgen, A.K.; Michna, P.; Plüss, P.; Buchmann, N.; Eugster, W. Management and climate impacts on net CO<sub>2</sub> fluxes and carbon budgets of three grasslands along an elevational gradient in Switzerland. *Agric. For. Meteorol.* **2010**, *150*, 519–530. [CrossRef]

76. Gómez Giménez, M.; de Jong, R.; Della Peruta, R.; Keller, A.; Schaepman, M.E. Determination of grassland use intensity based on multi-temporal remote sensing data and ecological indicators. *Remote Sens. Environ.* **2017**, *198*, 126–139. [CrossRef]
77. Ledgard, S.F. Nitrogen cycling in low input legume-based agriculture, with emphasis on legume/grass pastures. *Plant Soil* **2001**, *228*, 43–59. [CrossRef]
78. Huber, R.; Rigling, A.; Bebi, P.; Brand, F.S.; Briner, S.; Buttler, A.; Elkin, C.; Gillet, F.; Grêt-Regamey, A.; Hirschi, C.; et al. Sustainable land use in mountain regions under global change: Synthesis across scales and disciplines. *Ecol. Soc.* **2013**, *18*. [CrossRef]
79. Schuster, M.J.; Smith, N.G.; Dukes, J.S. Responses of aboveground C and N pools to rainfall variability and nitrogen deposition are mediated by seasonal precipitation and plant community dynamics. *Biogeochemistry* **2016**, *129*, 389–400. [CrossRef]
80. Bassin, S.; Volk, M.; Fuhrer, J. Species Composition of Subalpine Grassland is Sensitive to Nitrogen Deposition, but Not to Ozone, After Seven Years of Treatment. *Ecosystems* **2013**, *16*, 1105–1117. [CrossRef]
81. Vankoughnett, M.R.; Henry, H.A.L. Soil freezing and N deposition: Transient vs multi-year effects on plant productivity and relative species abundance. *New Phytol.* **2014**, *202*, 1277–1285. [CrossRef] [PubMed]
82. Matson, P.; Lohse, K.A.; Hall, S.J. The globalization of nitrogen deposition: Consequences for terrestrial ecosystems. *Ambio* **2002**, *31*, 113–119. [CrossRef] [PubMed]
83. Krupa, S.V. Effects of atmospheric ammonia (NH<sub>3</sub>) on terrestrial vegetation: A review. *Environ. Pollut.* **2003**, *124*, 179–221. [CrossRef]
84. Bergström, A.K.; Jansson, M. Atmospheric nitrogen deposition has caused nitrogen enrichment and eutrophication of lakes in the northern hemisphere. *Glob. Chang. Biol.* **2006**, *12*, 635–643. [CrossRef]
85. Camargo, J.A.; Alonso, Á. Ecological and toxicological effects of inorganic nitrogen pollution in aquatic ecosystems: A global assessment. *Environ. Int.* **2006**, *32*, 831–849. [CrossRef] [PubMed]
86. Hesterberg, R.; Blatter, A.; Fahrni, M.; Rosset, M.; Neftel, A.; Eugster, W.; Wanner, H. Deposition of nitrogen-containing compounds to an extensively managed grassland in central Switzerland. *Environ. Pollut.* **1996**, *91*, 21–34. [CrossRef]
87. Bassin, S.; Schalajda, J.; Vogel, A.; Suter, M. Different types of sub-alpine grassland respond similarly to elevated nitrogen deposition in terms of productivity and sedge abundance. *J. Veg. Sci.* **2012**, *23*, 1024–1034. [CrossRef]
88. Della Peruta, R.; Keller, A. A regional modelling tool to assess the risk of accumulation of nutrients, trace metals and pesticides in agricultural soils (iMSoil). BGS-Bulletin 37: 9–15. *Année internationale des Sols—et Maintenant? Pédologie*, S.S.D., Ed.; Genève, Switzerland, 2016. Available online: <http://www.soil.ch/cms/publikationen/bulletins/bulletin-37/> (accessed on 2 June 2017).
89. Gómez Giménez, M.; Della Peruta, R.; de Jong, R.; Keller, A.; Schaepman, M.E. Spatial Differentiation of Arable Land and Permanent Grassland to Improve a Land Management Model for Nutrient Balancing. *IEEE J. Sel. Top. Appl. Earth Obs. Remote Sens.* **2016**, *9*, 5655–5665. [CrossRef]
90. Migliavacca, M.; Reichstein, M.; Richardson, A.D.; Colombo, R.; Sutton, M.A.; Lasslop, G.; Tomelleri, E.; Wohlfahrt, G.; Carvalhais, N.; Cescatti, A.; et al. Semiempirical modeling of abiotic and biotic factors controlling ecosystem respiration across eddy covariance sites. *Glob. Chang. Biol.* **2011**, *17*, 390–409. [CrossRef]
91. Volk, M.; Enderle, J.; Bassin, S. Subalpine grassland carbon balance during 7 years of increased atmospheric N deposition. *Biogeosciences* **2016**, *13*, 3807–3817. [CrossRef]
92. Zscheischler, J.; Reichstein, M.; Harmeling, S.; Rammig, A.; Tomelleri, E.; Mahecha, M.D. Extreme events in gross primary production: A characterization across continents. *Biogeosciences* **2014**, *11*, 2909–2924. [CrossRef]
93. Zaehle, S.; Friend, A.D.; Friedlingstein, P.; Dentener, F.; Peylin, P.; Schulz, M. Carbon and nitrogen cycle dynamics in the O-CN land surface model: 2. Role of the nitrogen cycle in the historical terrestrial carbon balance. *Glob. Biogeochem. Cycles* **2010**, *24*. [CrossRef]
94. Smith, B.; Wärlind, D.; Arneth, A.; Hickler, T.; Leadley, P.; Siltberg, J.; Zaehle, S. Implications of incorporating N cycling and N limitations on primary production in an individual-based dynamic vegetation model. *Biogeosciences* **2014**, *11*, 2027–2054. [CrossRef]
95. Xu, R.; Prentice, I.C. Modelling the demand for new nitrogen fixation by terrestrial ecosystems. *Biogeosciences* **2017**, *14*, 2003–2017.

96. Churkina, G.; Zaehle, S.; Hughes, J.; Viovy, N.; Chen, Y.; Jung, M.; Heumann, B.W.; Ramankutty, N.; Heimann, M.; Jones, C. Interactions between nitrogen deposition, land cover conversion, and climate change determine the contemporary carbon balance of Europe. *Biogeosciences* **2010**, *7*, 2749–2764. [[CrossRef](#)]
97. Drewniak, B.; Gonzalez-Meler, M.A. Earth system model needs for including the interactive representation of nitrogen deposition and drought effects on forested ecosystems. *Forests* **2017**, *8*, 267. [[CrossRef](#)]
98. Cai, X.; Yang, Z.L.; Fisher, J.B.; Zhang, X.; Barlage, M.; Chen, F. Integration of nitrogen dynamics into the Noah-MP land surface model v1.1 for climate and environmental predictions. *Geosci. Model Dev.* **2016**, *9*, 1–15. [[CrossRef](#)]
99. McGuire, A.D.; Sitch, S.; Clein, J.S.; Dargaville, R.; Esser, G.; Foley, J.; Heimann, M.; Joos, F.; Kaplan, J.; Kicklighter, D.W.; et al. Carbon balance of the terrestrial biosphere in the twentieth century: Analyses of CO<sub>2</sub>, climate and land use effects with four process-based ecosystem models. *Glob. Biogeochem. Cycles* **2001**, *15*, 183–206. [[CrossRef](#)]



© 2019 by the authors. Licensee MDPI, Basel, Switzerland. This article is an open access article distributed under the terms and conditions of the Creative Commons Attribution (CC BY) license (<http://creativecommons.org/licenses/by/4.0/>).

© 2019. This work is licensed under  
<https://creativecommons.org/licenses/by/4.0/> (the “License”).  
Notwithstanding the ProQuest Terms and Conditions, you may use this  
content in accordance with the terms of the License.